



Tulipas do Fortim

CONDOMÍNIO

FORTIM | CEARÁ | BRASIL

Come and discover paradise: wegitnederland.com/



A true paradise
of nature.



Canto da Barra Beach – Fortim Ceará Brasil

An oasis in full development



Canto da Barra Beach – Fortim Ceará Brasil

Tourism Entertainment Business Gastronomy



Pontal do Maceió Beach – Fortim Ceará Brasil

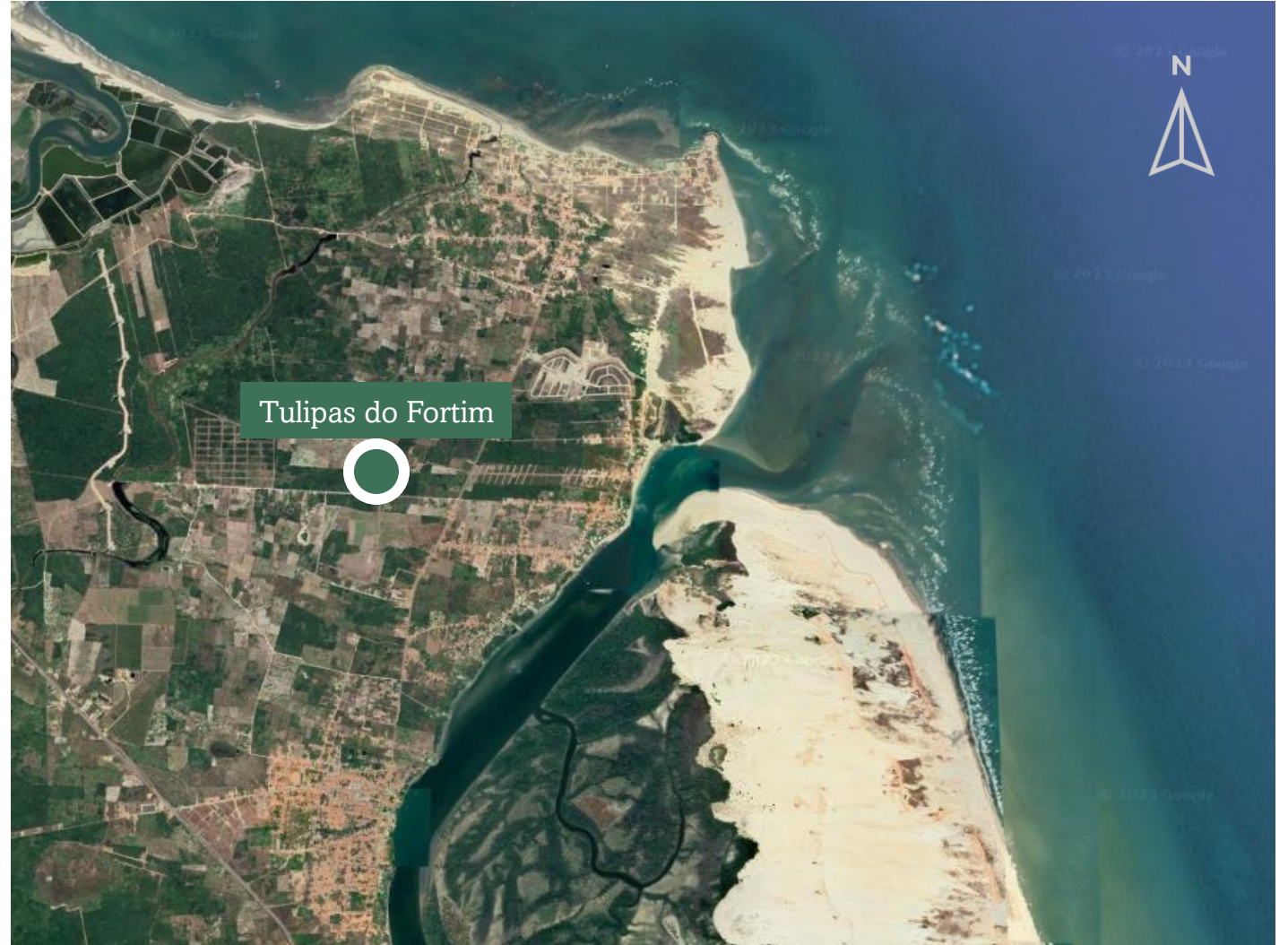
Fortim: the best of the Ceará coast.



Mirante do Pontal Beach – Fortim Ceará Brasil

Fortim is a municipality located about 111 kilometers from Fortaleza, on the east coast of Ceará, with a population of 16,000.

A region with recognised tourist potential, with beaches such as **Pontal de Maceió**, Fortim has established itself in recent years as a destination for foreign investment with a focus on **tourism and economic development**.



Tulipas do Fortim is a 12,000 m² development comprising a condominium of **36 flat houses**, a **commercial building with shops and studios of 24.0m² each** and a **500.0m² duplex residence with a swimming pool**.

Based on the growing local demand for housing and commercial premises, the development offers the region quality space for living, investing and doing business.

The project was based on space optimisation, environmental and landscape quality and the well-being of residents and users of the space.





RUA JOSÉ FERNANDES





COMMERCIAL BUILDING

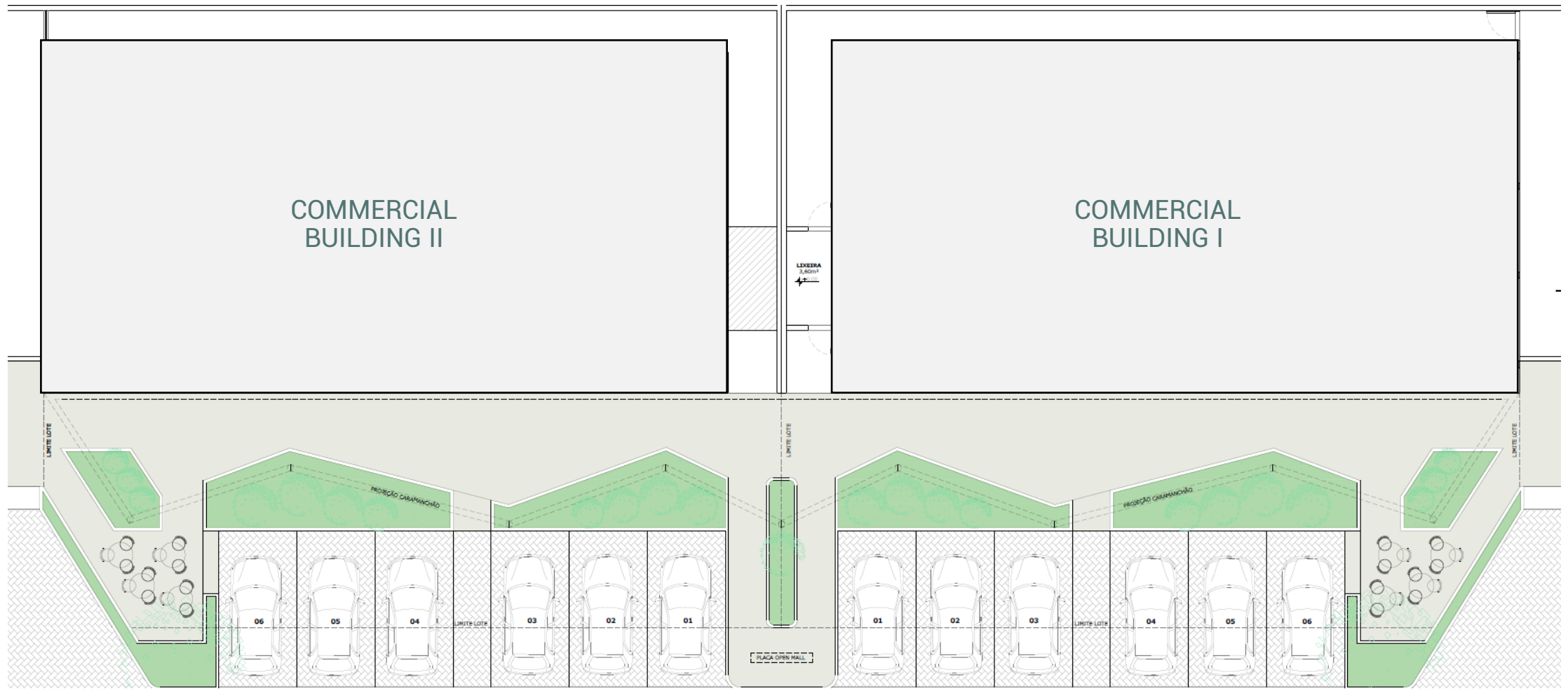
Total built area: 450.0m²

6 shops of 24.0m² with storage room and toilet

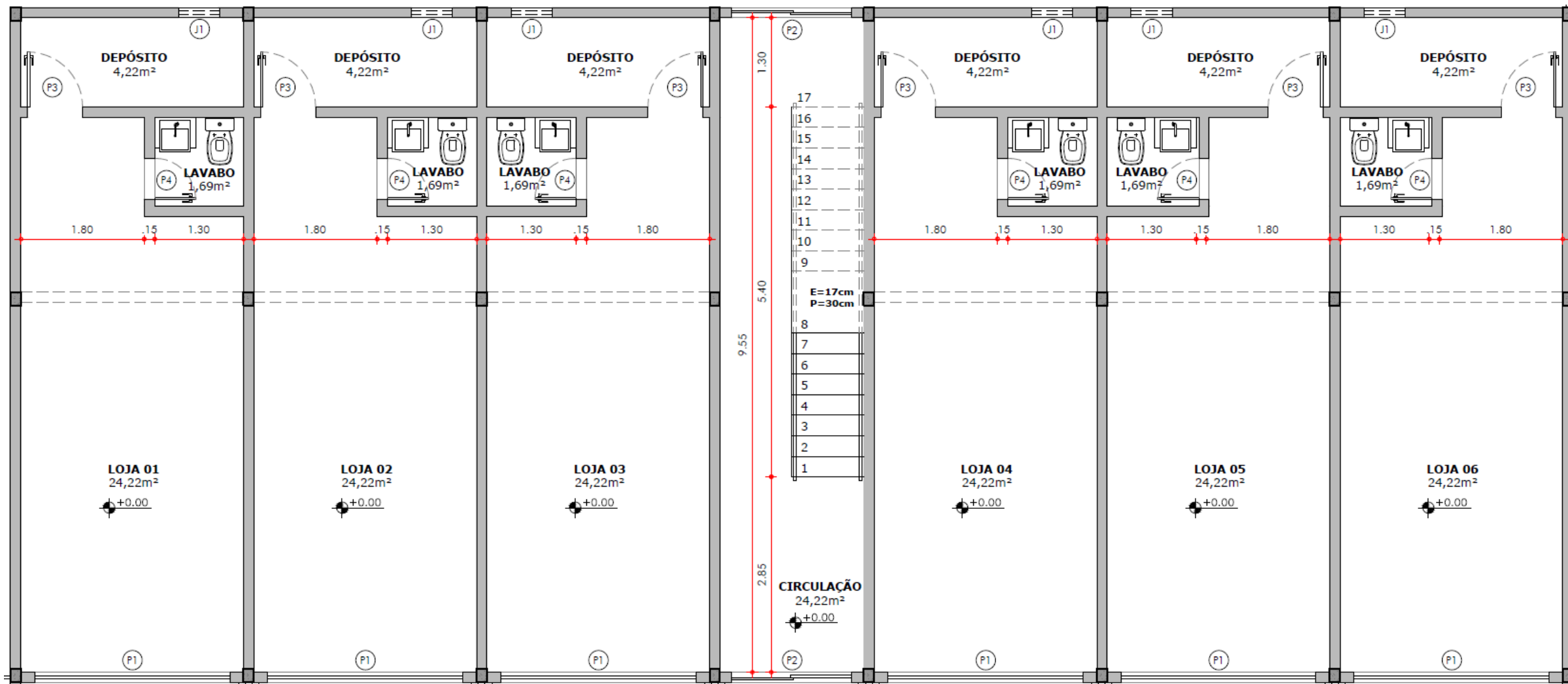
6 studios of 24.0m² with bathroom and pantry

Car park with 6 spaces

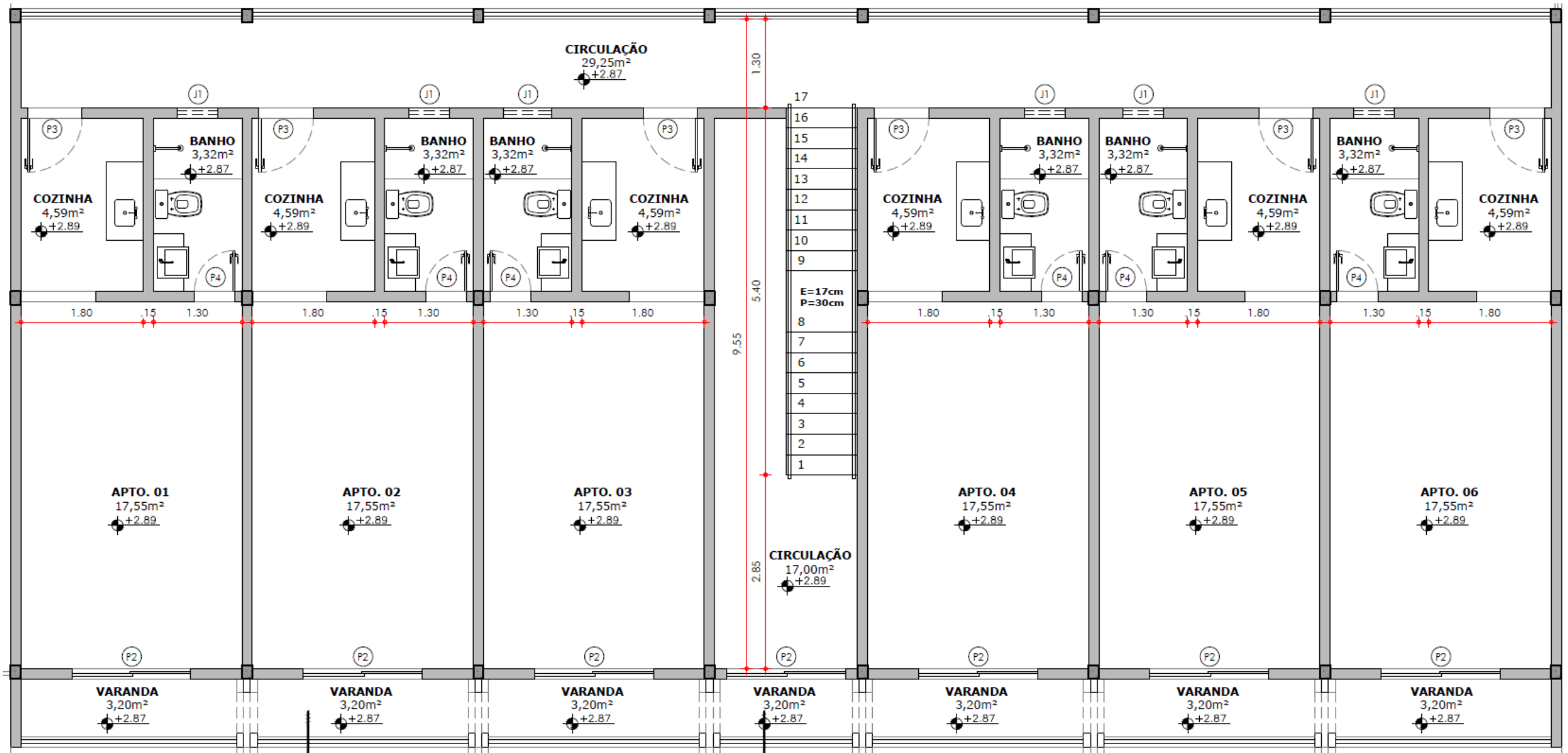
Garden and walkway with arbour and landscaping



Garden and Car park



Ground Floor Plan - shops



1st Floor Plan - studios













CONDOMINIUM OF HOUSES

Total area: 10,728.00m²

36 flat houses of 120.00 m²

3 bedrooms + gourmet balcony on plots of 182.00m² and 192.00m²

playground, sandpit and garden

swimming pool, air-conditioned party room, gym and barbecue area

Common areas with accessibility and lush landscaping

Elevated entrance with automated security

ENTRANCE AND ACCESS:
Raised gatehouse,
accessibility, landscaped
entrance plaza, parking
spaces for visitors





ENTRANCE AND ACCESS:
Raised gatehouse,
accessibility, landscaped
entrance plaza, parking
spaces for visitors



ENTRANCE AND ACCESS:
Raised gatehouse,
accessibility, landscaped
entrance plaza, parking
spaces for visitors

HOUSE OF 120.00 M²
Garage, lounge/kitchen,
suite, 2 bedrooms,
bathroom, gourmet
balcony and garden



Floor Plan house 120m²

HOUSE OF 120.00 M²
Garage, lounge/kitchen,
suite, 2 bedrooms,
bathroom, gourmet
balcony and garden





HOUSE OF 120.00 M²
Garage, lounge/kitchen,
suite, 2 bedrooms,
bathroom, gourmet
balcony and garden




LEISURE ÁREA: Air-conditioned party room, deck with barbecue grill, gym/lounge, adult and children's pool



LEISURE ÁREA: Air-conditioned party room, deck with barbecue grill, gym/lounge, adult and children's pool



LEISURE ÁREA: Air-conditioned party room, deck with barbecue grill, gym/lounge, adult and children's pool



LEISURE ÁREA: Arbour with tables, garden, playground, sandpit



LEISURE ÁREA: Arbour with tables, garden, playground, sandpit

An architectural rendering of a modern duplex residence. The image shows a two-story building with a prominent vertical stone pillar and a large window. In the foreground, there is a covered garage area with a white car and a dark car parked. The background features trees and a clear sky.

DUPLEX RESIDENCE WITH SWIMMING POOL

Private duplex residence with 500.0m² of built area

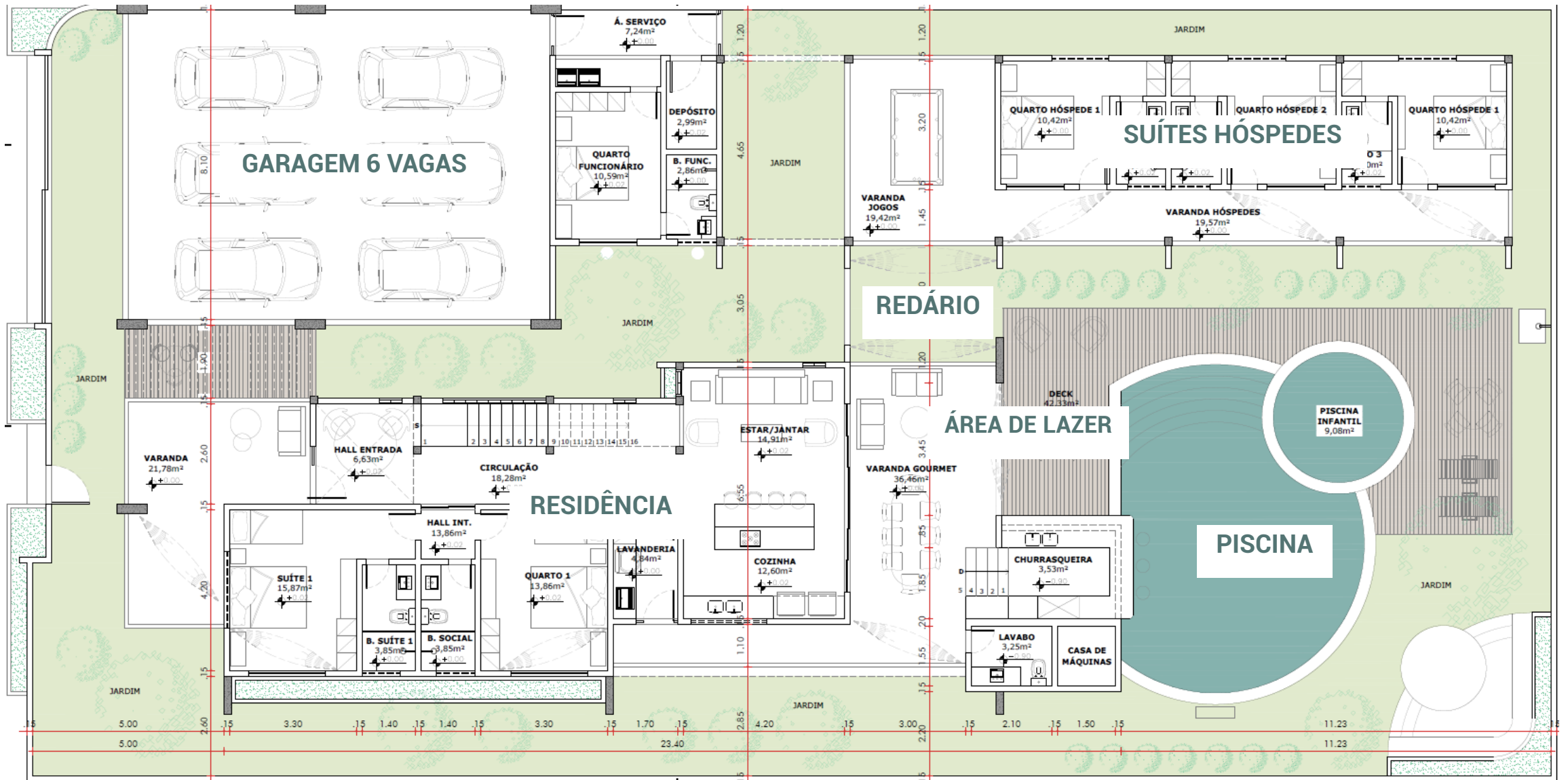
Plot area: 800.0m²

3 bedrooms and 3 bathrooms

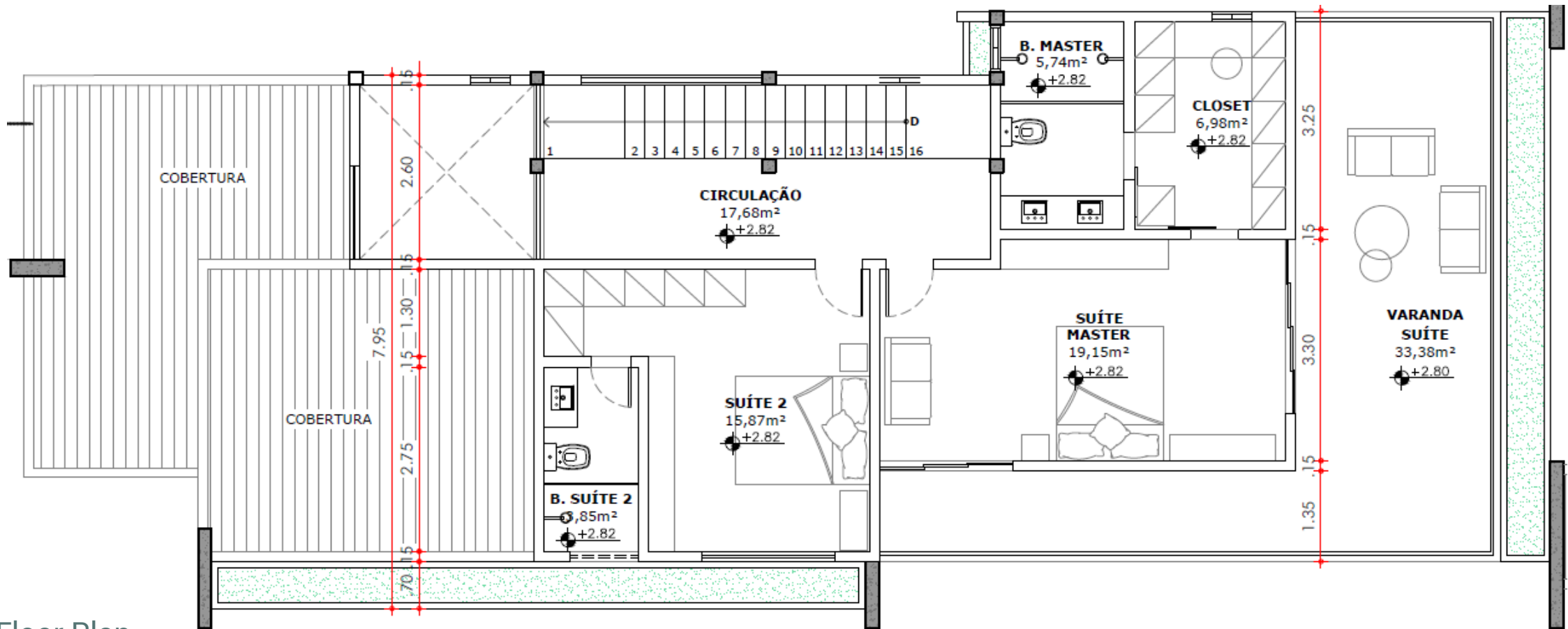
Superior master suite with bathroom, dressing room and private balcony
gourmet veranda, hammock, adult and children's pool, wet bar, guest toilet

3 independent guest suites

Garage for 6 cars



General Floor Plan



1st Floor Plan













Tulipas do Fortim

CONDOMÍNIO

FORTIM | CEARÁ | BRASIL

Come and discover paradise: weguitnederland.com/

ARCHITECTURE,
LANDSCAPE,
INTERIOR AND
LIGHTING

@dialeticaarquitectura



FIND
OUT
MORE
HERE:

